

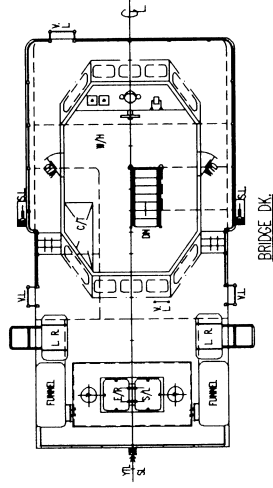
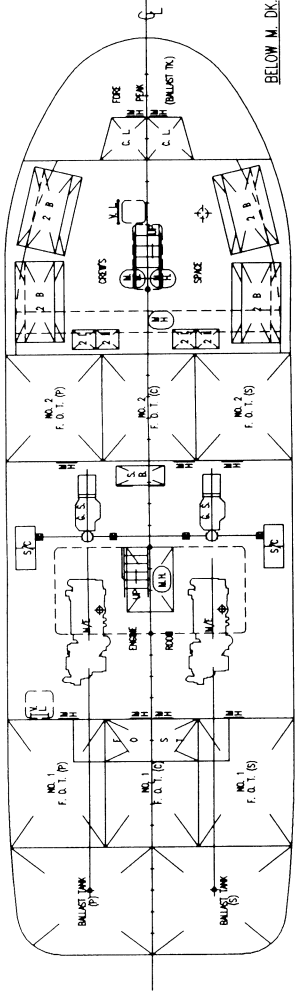
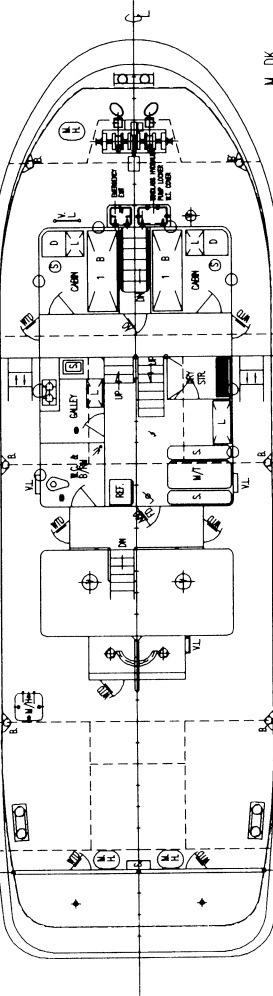
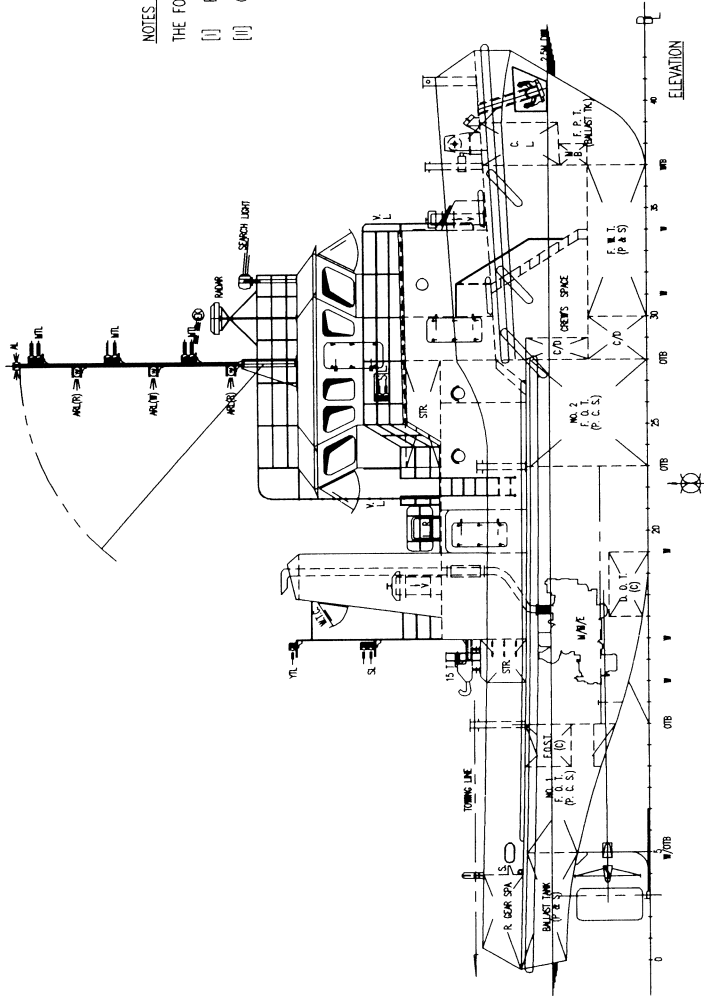
**PRINCIPAL PARTICULAR :-**

- L. O. A. :- 23.50 M (77.08 FT)
- L. B. P. :- 21.08 M (69.16 FT)
- BEAM MLD :- 7.32 M (24.00 FT)
- DEPTH MLD :- 3.10 M (10.17 FT)
- DESIGNED DRAFT :- 2.50 M ( 8.20 FT)
- CREW :- 10 MEN
- FUEL OIL :- 91.00 M<sup>3</sup> ( 100% FULL )
- FRESH WATER :- 21.00 M<sup>3</sup> ( 100% FULL )
- BALLAST :- 43.00 M<sup>3</sup> ( 100% FULL )
- MAIN ENGINE :- 2 X CUMMINS KTA-19-M1  
500 BHP / 1800 RPM EACH
- GEAR BOX :- T300 6 : 1 RATIO
- GENERATOR :- 2 X 24 KW EACH
- SPEED :- 12 KNOTS (FREE RUNNING)
- DESIGNED B. P. :- 12 TONNES (APPROXIMATE)

**NOTES :-**

THE FOLLOWING EQUIPMENTS IS TO BE PROVIDED ON BOARD

- (i) BOW ANCHOR ----- 2 X 300 KG
- (ii) CHAIN CABLE ----- 247.5 m X 19.0 mm φ (GRADE I)  
17.6 mm φ (GRADE II)



**NOTES :-**

- (A) ✓ : DK. PLATE BETWEEN F.O.T. AND ACC. SP. TO BE COVERED BY INCOMBUSTIBLE MATERIALS.
- (B) ✓ : A60 FIRE DOOR C/W SELF-CLOSER

This drawing and the information contained herein is supplied on the understanding that they are the exclusive property of WANG SANG & ASSOCIATES SDN. BHD. They must not be used or reproduced in whole or in part without permission in writing. 02/12/2012

DATE : MODIFICATION : REV. BY :

DESIGNER : WANG SANG & ASSOCIATES SDN. BHD.

(COMPANY NO. S07290-W)

(MARINE DESIGNS ENGINEERING & SUPERVISION)

2nd FLOOR, 4C, LORONG JUNG KONG, 96000 ;

GPO L/B 18, NCS 50212, 96009

SIBU, SARAWAK, MALAYSIA

TEL:- 084-331582, 334725 (O), 318375 (R), FAX:- 084-322088

EMAIL : richeng@pc.jaring.my

SHIP :

23M T. S. TUG

TITLE :

**GENERAL ARRANGEMENT**

OWNER	SKY-E MARINE SDN. BHD., SIBU	YD. NO.	
BUILDER	KN	P.O.R.	
CLASS		TRADE	
DRN	TRACED	CHECKED	SCALE
LINDA	PAUL WONG		
JOB NO.			
DWG. NO.			
REV.			
		1 : 100	
		WS01630-1(5)-G	